



# Washoe County Regional Communication System

P25 JOC,  
04/17/2025

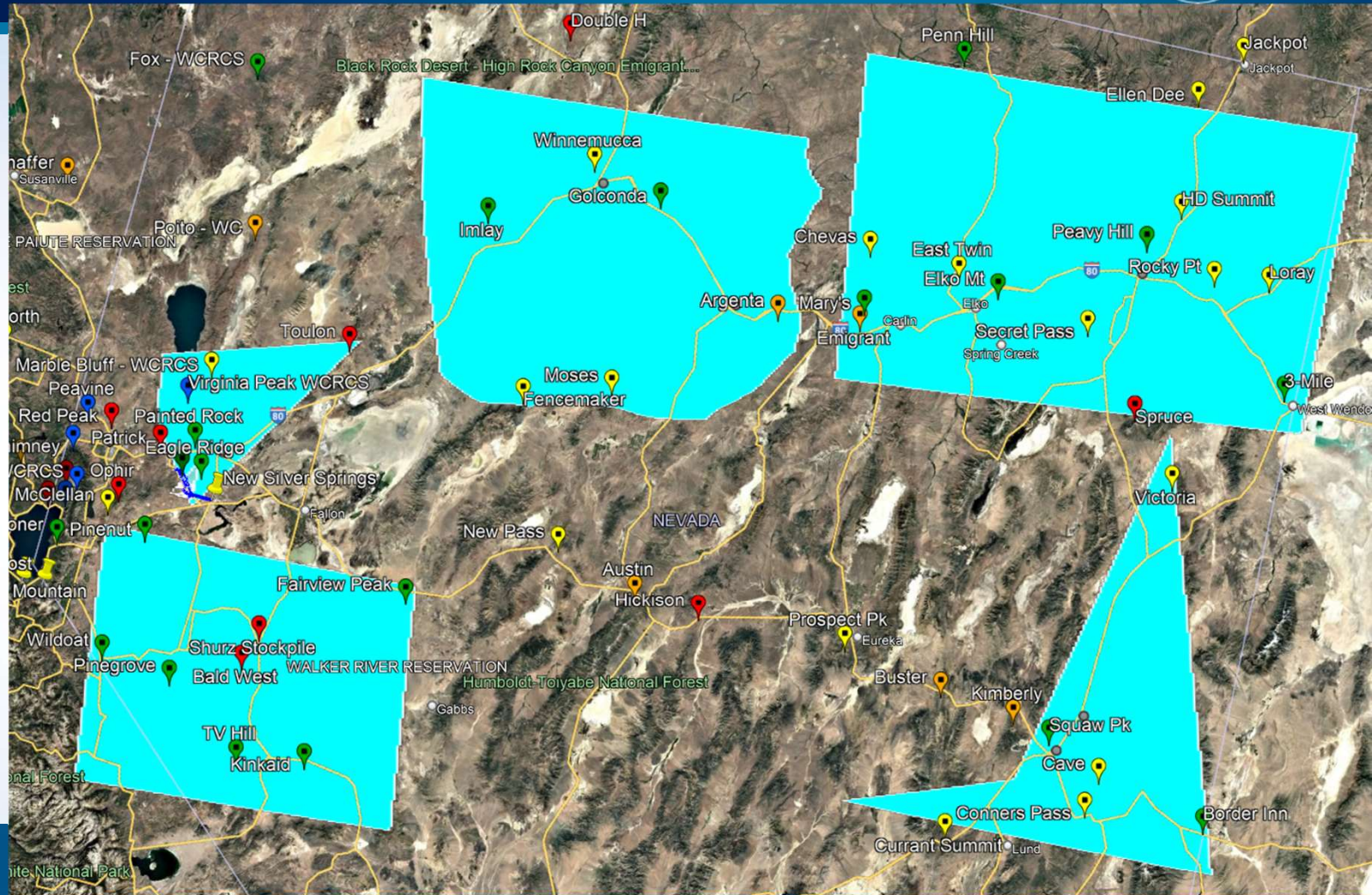
Red indicates risk or site not built  
Green indicates work completion  
Yellow indicates work in progress

[illegible]

# What are MicroRegions?



- P25 Upgrade Project was placed on a Program Pause as the NSRS members didn't have enough sites to provide L3Harris for P25 Line and Antenna work.
- Program Paused caused a series of Contracts negotiation discussions.
- One scenario was to break up Region 2 and Region 3 into smaller sections that could be accomplished this year.





# MicroRegions- Affect on Washoe County



- Plan is to complete P25 Line and Antenna installation in Ely, Nevada, working up to Elko, Nevada. Then following the I-80 Corridor and go East to West.
- There is **not** a plan to bring up Reno this year, Due to unbuilt sites within our region. ( Smokey Quartz, Seven Lakes, Biltmore)\*
- However, the plan continues to install sites from Carson down to Hawthorne. To connect to existing Region 1 coverage
- The hope is to complete installations in the region around Pyramid Lake, possibly up to Gerlach.
  - WCRCS sites to complete would include:
    - Marble Bluff
    - Virginia Peak
    - Poito\*
    - Fox\*
  - Other NSRS sites:
    - Painted Rock
    - Eagle Ridge
    - Toulon
    - USA PKWY
- **MicroRegions are still under discussion, and not fully vetted. We await a schedule and discussions with L3Harris.**
- **First request for change order REJECTED, Awaiting new draft from L3Harris Request For Change (RFC)**





# Questions & Concerns?

Melissa Lawney  
Washoe County Regional  
Communications Coordinator  
230 Edison Way  
Reno, NV 89502  
(775) 858-5952

Thank you